

Opportunity

“Be passionate and bold. Always keep learning. You stop doing useful things if you don't learn.” - Satya Nadella, CEO, Microsoft

We live in a mobile-first and cloud-first world. Computing is ubiquitous, and experiences span devices and exhibit ambient intelligence. Billions of sensors, screens and devices - in conference rooms, living rooms, cities, cars, phones, PCs - are forming a vast network and streams of data that simply disappear into the background of our lives.

This computing power will digitize nearly everything around us and will derive insights from all of the data generated by interactions among people and between people and machines. We are moving from a world where computing power was scarce to a place where it now is almost limitless, and where the true scarce commodity is increasingly human attention.

In this new connected world, we believe technology creates opportunity, and we design our Modern Learning courses to provide learners with the core development skills needed to be successful in the cloud-first, mobile-first world. These Online courses, taught by Microsoft experts, provide skills and knowledge to your learners through hands-on experience with broad reach, cutting-edge technologies in areas including cloud services, mobile development, and data sciences.

Whether delivered in self-paced, assisted or Blended Learning mode, you can now empower your learners, both students, career aspirants and seasoned technologists, with the right skills and hands-on experiences to build innovative applications, services, and experiences leveraging the Microsoft platform that will help them make a meaningful impact in today's interconnected world.

Welcome to the world of Microsoft technology and Learning as a Service - helping learners choose a path and make their mark.

Content

- | | |
|---|----------------|
| • Learning as a Service (LaaS) Course Content Guidance: | Pages 2 to 3 |
| • LaaS 2019 Q2 Release List of Courses: | Pages 4 to 6 |
| • Online Training Course List and Tracks: | Pages 7 to 9 |
| • MPP Tracks: | Pages 10 to 15 |
| • Support: | Pages 16 to 19 |
| • Annexure - Retired Courses: | Pages 20 to 30 |

NOTE: *Any questions or concerns regarding certificate issuance should be directed to your Microsoft Account Manager Contact.*

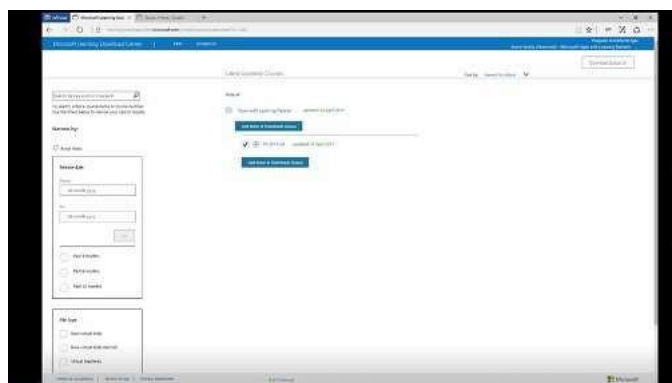
Our approach with Course Availability

In the Learning as a Service Program, we continue our efforts to ensure that the courses we provide are current and applicable to your learning needs. Every quarter we take the opportunity to review our course catalog and will occasionally refresh and/or retire courses permanently from our catalog as needed.

- We refresh several, previously released ONLINE courses from prior quarters, on an ongoing basis to keep them fresh and relevant with the changes in underlying technology. We intend to replace the previously provided courses with updated material and information.
- We release new courses to add to our catalog providing a broadening scope of technology, domains, job roles and related learning and skills for our learner community.
- We re-run many courses that have been previously released from prior quarters, this occurs on an ongoing basis when no change or update are required to maintain the courses relevance. These courses will have indicators (RUN ID) which show their delivery from prior quarter releases.
- We retire older, outdated courses from the [Microsoft Learning Download Center](#) and no longer recommend them to be rerun. This is mostly due to market relevance, significant changes in underlying technology. We do have replacement courses in some cases where we map objective domains and may not have a replacement course in many cases where there are significant changes. Retired courses would not be eligible for Microsoft Certificates, 90 days post retirement announcement.

Download & Setup Courses

As a Learning as a Service Partner, you have been added to a trusted site where you can download the courses. The site could be accessed via this [link](#). Please note that this site requires a Microsoft Account (Live, Hotmail, Outlook etc.) the details of which were provided during the Partner Onboarding process. Use the instructions provided in the following videos that were created to walk you through the set-up process.

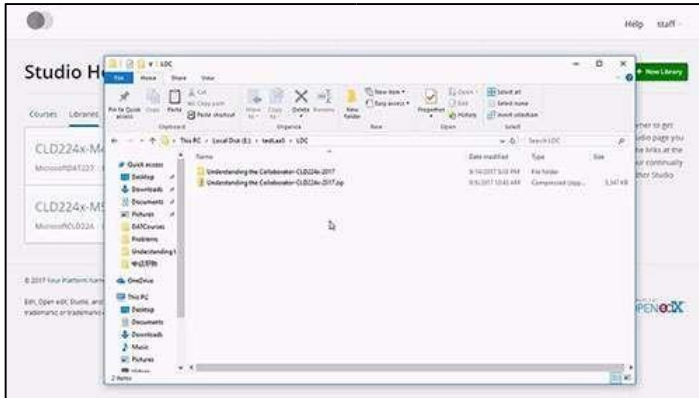


Video 4 - [Where to find courses - LDC demo](#)



Video 5 - [Importing Content and Testing](#)

Deploying content with library requirements



Video - [Deploying content with library requirements](#)

2019 Q2 Summer Release List of Courses

Course ID sorts this content in alphabetical order.

Each RUN_ID represents courses released or refreshed during specific times during the calendar year. The number after the “T” in the RUN_ID corresponds to the quarter the courses were releasing or refreshed. They maintain relevance and do not require an update.

RUN_ID 2019_T2 corresponds to courses newly released or updated in the most recent course launch.

Courses marked with a 📌 indicate that it includes a lab; courses marked with an additional 🍎 indicate that the included lab is graded.

Finally, to view those courses that are scheduled to be retired in a future release and/or have been retired, please review Annexure 1 (Retired Courses).

SI No.	Course ID	Run ID	Course Name	Microsoft Solution Area Mapping	Latest Refresh Date
1	CLD211.2x	2019_T1	Microsoft SharePoint 2016: Authentication and Security	MW	Apr-19
2	CLD245x	2019_T1	Security in Office 365	MW	Apr-19
3	CLD251x	2018_T4	IT Support: Fundamentals	MW	Apr-19
4	CLD252x	2018_T2	IT Support: Communication	MW	Apr-19
5	CLD253x	2018_T2	IT Support: Troubleshooting	MW	Apr-19
6	CLD254x	2018_T2	IT Support: Documentation	MW	Apr-19
7	CLD255x	2018_T4	Windows Support Essentials: Installation 📌	MW	Apr-19
8	CLD256x	2019_T1	Windows Support Essentials: Maintenance 📌	MW	Apr-19
9	CLD257x	2018_T2	Windows Support Essentials: Configuration 📌	MW	Apr-19
10	CLD258x	2019_T1	IT Support: Troubleshooting Windows 📌	MW	Apr-19
11	CLD259x	2018_T2	IT Support: Hardware Essentials	MW	Apr-19
12	CLD260x	2018_T3	IT Support: Networking Essentials	MW	Apr-19
13	CLD261x	2018_T2	Microsoft Office Fundamentals: Outlook, Word and Excel	MW	Apr-19
14	CLD262x	2018_T4	IT Support: Troubleshooting Microsoft Office	MW	Apr-19
15	CLD263x	2019_T1	IT Support: Cloud Fundamentals 📌🍎	MW	Apr-19
16	DAT101x	2019_T2	Introduction to Data Science	D+AI	Apr-19
17	DAT201x	2018_T2	Querying Data with Transact SQL	D+AI	Apr-19
18	DAT202.1x	2018_T3	Processing Big Data with Hadoop in Azure HDInsight	D+AI	Apr-19
19	DAT202.2x	2018_T3	Implementing Real-Time Analytics with Hadoop in Azure HDInsight	D+AI	Apr-19
20	DAT202.3x	2018_T3	Implementing Predictive Analytics with Spark in Azure HDInsight	D+AI	Apr-19
21	DAT204x	2018_T2	Introduction to R for Data Science	D+AI	Apr-19
22	DAT205x	2018_T2	Introduction to Data Analysis using Excel	D+AI	Apr-19
23	DAT206x	2019_T1	Analyzing and Visualizing Data with Excel	D+AI	Apr-19
24	DAT207x	2019_T2	Analyzing and Visualizing Data with Power BI	D+AI	Apr-19
25	DAT208x	2018_T3	Introduction to Python for Data Science	D+AI	Apr-19
26	DAT213x	2019_T1	Analyzing Big Data with Microsoft R	D+AI	Apr-19
27	DAT220x	2018_T4	Delivering a Data Warehouse in the Cloud	D+AI	Apr-19
28	DAT221x	2018_T2	Introduction to NoSQL Data Solutions	D+AI	Apr-19

29	DAT222x	2018_T2	Essential Statistics for Data Analysis using Excel	D+AI	Apr-19
30	DAT223.1x	2018_T2	Processing Big Data with Azure Data Lake Analytics	D+AI	Apr-19
31	DAT223.2x	2018_T3	Processing Real-Time Data Streams in Azure	D+AI	Apr-19
32	DAT223.3x	2019_T1	Orchestrating Big Data with Azure Data Factory	D+AI	Apr-19
33	DAT228x	2018_T2	Developing Big Data Solutions with Azure Machine Learning	D+AI	Apr-19
34	DAT229x	2018_T4	Introduction to Big Data	D+AI	Apr-19
35	DAT236x	2019_T2	Deep Learning Explained	D+AI	Apr-19
36	DAT237x	2019_T2	Developing Planet-Scale Applications in Azure Cosmos DB	D+AI	May-19
37	DAT243x	2018_T4	Securing Data in Azure and SQL Server	D+AI	Apr-19
38	DAT248x	2019_T1	Analytics Storytelling for Impact	D+AI	Apr-19
39	DAT249x	2018_T3	Ethics and Law in Data and Analytics	D+AI	Apr-19
40	DAT256x	2019_T2	Essential Math for Machine Learning-Python Edition	D+AI	Apr-19
41	DAT257x	2019_T1	Reinforcement Learning Explained	D+AI	Apr-19
42	DAT263x	2019_T1	Introduction to Artificial Intelligence	D+AI	Apr-19
43	DAT268x	2018_T4	Data Visualization: A Practical Approach for Absolute Beginners	D+AI	Apr-19
44	DAT269x	2019_T1	Data Analysis: A Practical Approach for Absolute Beginners	D+AI	Apr-19
45	DAT273x	2019_T1	Data Science Research Methods: Python Edition	D+AI	Apr-19
46	DAT274x	2019_T1	Data Science Research Methods: R Edition	D+AI	Apr-19
47	DAT275x	2019_T2	Principles of Machine Learning: Python Edition	D+AI	Apr-19
48	DAT276x	2019_T2	Principles of Machine Learning: R Edition	D+AI	Apr-19
49	DAT278x	2019_T2	From Graph to Knowledge Graph - Algorithms, Theory and Applications	D+AI	Apr-19
50	DAT280x	2018_T4	Essential Math for Machine Learning: R Edition	D+AI	Apr-19
51	DAT286x	2018_T4	Essential Math for Data Analysis using Excel Online	D+AI	Apr-19
52	DAT289x	2019_T1	Applied Data Analysis: Working in Organizations and Industries	D+AI	Apr-19
53	DEV204.1x	2018_T2	Introduction to C#	A+I	Apr-19
54	DEV204.2x	2018_T2	Object Oriented Programming in C#	A+I	Apr-19
55	DEV204.3x	2018_T2	Algorithms and Data Structures in C#	A+I	Apr-19
56	DEV210.2x	2018_T4	Intermediate C++	A+I	Apr-19
57	DEV210.3x	2018_T4	Advanced C++	A+I	Apr-19
58	DEV210x	2018_T2	Introduction to C++	A+I	Apr-19
59	DEV236x	2019_T2	Introduction to Python: Absolute Beginner	A+I	Apr-19
60	DEV241x	2018_T4	Introduction to Design Thinking	A+I	Apr-19
61	DEV262x	2018_T4	Logic and Computational Thinking	A+I	Apr-19
62	DEV274x	2019_T2	Introduction to Python-Fundamentals	A+I	Apr-19
63	DEV275x	2018_T4	Writing Professional Code	A+I	Apr-19
64	DEV276x	2019_T1	Learn to Program in Java	A+I	Apr-19
65	DEV277x	2019_T1	Object Oriented Programming in Java	A+I	Apr-19
66	DEV279x	2019_T1	Building Interactive Prototypes using JavaScript	A+I	Apr-19
67	DEV280x	2019_T1	Building Functional Prototypes using Node.js	A+I	Apr-19
68	DEV284x	2018_T4	Designing a Technical Solution	A+I	Apr-19

69	DEV285x	2018_T4	Algorithms and Data Structures	A+	Apr-19
70	DEV287x	2018_T4	Speech Recognition Systems	A+	Apr-19
71	DEV288x	2018_T2	Natural Language Processing(NLP)	A+	Apr-19
72	DEV290x	2018_T4	Computer Vision and Image Analysis	A+	Apr-19
73	DEV296x	2019_T1	Getting Started with the Internet of Things (IoT)	A+	Apr-19
74	DEV297x	2019_T2	IoT Device Configuration and Communication: C Edition	A+	Apr-19
75	DEV301x	2019_T2	IoT Solution Architecture Design and Business Planning	A+	Apr-19
76	DEV306x	2019_T2	Developing AI Vision Apps Using Microsoft Cognitive Services: C# Edition	A+	Apr-19
77	DEV312x	2019_T1	IoT Business Intelligence for IoT Solutions	A+	Apr-19
78	DEV313x	2019_T2	IoT Predictive Analytics for IoT Solutions	A+	Apr-19
79	DEV325x	2019_T1	Introduction to Device Programming for IoT: C Edition	A+	Apr-19
80	DEV326x	2019_T2	IoT Data Analytics and Storage	A+	Apr-19
81	DEV328x	2019_T2	Conversation as a Platform with the Microsoft Bot Framework: C# Edition	A+	Apr-19
82	DEV329x	2019_T2	Developing AI Speech Apps with Microsoft Cognitive Services: C# Edition	A+	May-19
83	DEVOPS200.1x	2019_T1	DevOps Practices and Principles	A+	Apr-19
84	DEVOPS200.2x	2018_T3	Infrastructure as Code	A+	Apr-19
85	DEVOPS200.3x	2018_T3	Continuous Integration and Continuous Deployment	A+	Apr-19
86	DEVOPS200.4x	2018_T2	Configuration Management for Containerized Delivery	A+	Apr-19
87	DEVOPS200.5x	2018_T2	DevOps Testing	A+	Apr-19
88	DEVOPS200.6x	2018_T4	DevOps for Databases	A+	Apr-19
89	DEVOPS200.7x	2018_T3	Application Monitoring and Feedback Loops	A+	Apr-19
90	DEVOPS200.8x	2018_T2	DevOps for Mobile Apps	A+	Apr-19
91	DEVOPS200.9x	2018_T3	Architecting Distributed Cloud Applications	A+	Apr-19
92	DIS50x	2018_T2	Developing International Software	A+	Apr-19
93	INF246x	2019_T2	Enterprise Security Fundamentals	A+	Apr-19
94	INF249x	2018_T4	Threat Detection: Planning for a Secure Enterprise 📌🍎	A+	Apr-19
95	INF250x	2019_T1	Planning a Security Incident Response	A+	Apr-19
96	INF251x	2018_T2	PowerShell Security Best Practices	A+	Apr-19
97	INF253x	2019_T1	Managing Identity 📌🍎	A+	Apr-19
98	INF258x	2018_T4	Windows 10 Security Features 📌🍎	A+	Apr-19
99	INF259x	2018_T2	Windows Server 2016-Security Features	A+	Apr-19
100	INF260x	2018_T2	Microsoft Azure Security Services 📌🍎	A+	Apr-19

Online Training (OLT) Course Catalog and Tracks

Designed to help 21st century job seekers and job keepers become and remain employable and is designed for career changers and those upskilling for technology jobs that are growing in demand, and the reach will extend to higher education, workforce development, and enterprises into the future as a majority of jobs require a level of technical skill. The below courses will be located within the [Learning Download Center](#) under folder **CY2019-Q2_Role-Based**.

Starting with this run of courses, certificates will NOT be included for Role Based courses on LaaS for both first release courses, and reruns. For the 7 updated courses in this batch (MD100, MD101 series) no certificate is included in the LaaS update.

2 first-release courses:

- AI-100.1 Designing and Implementing an Azure AI Solution
- DP-200.1 Implementing an Azure Data Solution

SI No.	Course ID	Run ID	Course Name	Microsoft Solution Area Mapping	Latest Refresh Date
1	AI-100.1	2019_T2	Designing and Implementing an Azure AI Solution	A+I	Jun-19
2	AZ-100.1	2019_T1	Managing Azure Subscriptions and Resources	A+I	Apr-19
3	AZ-100.2	2019_T1	Implementing and Managing Storage	A+I	Apr-19
4	AZ-100.3	2019_T1	Deploying and Managing Virtual Machines	A+I	Apr-19
5	AZ-100.4	2019_T1	Configure and Manage Virtual Networks	A+I	Apr-19
6	AZ-100.5	2019_T1	Manage Identities	A+I	Apr-19
7	AZ-101.1	2019_T1	Migrate Servers to Azure	A+I	Apr-19
8	AZ-101.2	2019_T1	Implement and Manage Application Services	A+I	Apr-19
9	AZ-101.3	2019_T1	Implement Advanced Virtual Networking	A+I	Apr-19
10	AZ-101.4	2019_T1	Secure Identities	A+I	Apr-19
11	AZ-200.1	2018_T3	Select the appropriate Azure technology development solution	A+I	Apr-19
12	AZ-200.2	2018_T3	Develop for Azure storage	A+I	Apr-19
13	AZ-200.3	2018_T3	Develop Azure Platform as a Service solutions	A+I	Apr-19
14	AZ-200.4	2018_T3	Implement security in Azure development solutions	A+I	Apr-19
15	AZ-201.1	2018_T3	Develop for an Azure cloud model	A+I	Apr-19
16	AZ-201.2	2018_T3	Implement Azure development integration solutions	A+I	Apr-19
17	AZ-201.3	2018_T3	Develop Azure Cognitive Services, Bot, and IoT solutions	A+I	Apr-19
18	AZ-203.1	2019_T2	Develop Azure Infrastructure as a Service compute solutions	A+I	Mar-19
19	AZ-203.2	2019_T2	Develop Azure Platform as a Service compute solutions	A+I	Mar-19
20	AZ-203.3	2019_T2	Develop for Azure storage	A+I	Mar-19
21	AZ-203.4	2019_T2	Implement Azure security	A+I	Mar-19
22	AZ-203.5	2019_T2	Monitor, troubleshoot, and optimize Azure solutions	A+I	Mar-19
23	AZ-203.6	2019_T2	Connect to and consume Azure, and third-party, services	A+I	Mar-19
24	AZ-300.1	2019_T1	Deploying and Configuring Infrastructure	A+I	Apr-19
25	AZ-300.2	2019_T2	Implementing Workloads and Security	A+I	Apr-19

26	AZ-300.3	2019_T1	Understanding Cloud Architect Technology Solutions	A+I	Apr-19
27	AZ-300.4	2019_T1	Creating and Deploying Apps	A+I	Apr-19
28	AZ-300.6	2019_T1	Developing for the Cloud	A+I	Apr-19
29	AZ-301.1	2019_T1	Designing for Identity and Security	A+I	Apr-19
30	AZ-301.2	2019_T1	Designing a Data Platform Solution	A+I	Apr-19
31	AZ-301.4	2019_T1	Designing an Infrastructure Strategy	A+I	Apr-19
32	AZ-400.1	2019_T1	Implementing DevOps Development Processes	A+I	Apr-19
33	AZ-400.2	2019_T1	Implementing Continuous Integration	A+I	Apr-19
34	AZ-400.3	2019_T1	Implementing Continuous Delivery	A+I	Apr-19
35	AZ-400.4	2019_T1	Implementing Dependency Management	A+I	Apr-19
36	AZ-400.5	2019_T1	Implementing Application Infrastructure	A+I	Apr-19
37	AZ-400.6	2019_T1	Implementing Continuous Feedback	A+I	Apr-19
38	AZ-400.7	2019_T1	Designing a DevOps Strategy	A+I	Apr-19
39	AZ-500.0	2019_T2	Microsoft Azure Security Technologies	A+I	Mar-19
40	AZ-900.1	2019_T2	Microsoft Azure Fundamentals	A+I	Apr-19
41	DP-200.1	2019_T1	Implementing an Azure Data Solution	A+I	May-19
42	MB-200.1	2019_T1	Dynamics - Power Platform applications	MW	Apr-19
43	MB-200.2	2019_T1	Dynamics - Power Platform automation	MW	Apr-19
44	MB-200.3	2019_T1	Dynamics - Power Platform integrations	MW	Apr-19
45	MB-200.4	2019_T1	Dynamics - Power Platform test and deploy	MW	Apr-19
46	MB-210.1	2019_T1	Dynamics 365 for customer engagement for Sales	MW	Apr-19
47	MB-230.1	2019_T1	Dynamics 365 for customer engagement for Customer Service	MW	Apr-19
48	MB-240.1	2019_T1	Configure settings and core functionality in Dynamics 365 for Marketing	MW	Mar-19
49	MB-240.2	2019_T1	Set up events and surveys in Dynamics 365 for Marketing	MW	Mar-19
50	MB-240.3	2019_T1	Universal Resource Scheduling for Dynamics 365 for Field Service	MW	Mar-19
51	MB-900.1	2019_T1	Dynamics 365 fundamentals	MW	Mar-19
52	MD-100.1	2019_T1	Installing Windows 10	MW	Apr-19
53	MD-100.2	2019_T1	Configuring Windows 10	MW	Apr-19
54	MD-100.3	2019_T1	Protecting Windows 10	MW	Apr-19
55	MD-100.4	2019_T1	Maintaining Windows 10	MW	Apr-19
56	MD-101.1	2019_T1	Deploying the Modern Desktop	MW	Apr-19
57	MD-101.2	2019_T1	Managing Modern Desktops and Devices	MW	May-19
58	MD-101.3	2019_T1	Protecting Modern Desktops and Devices	MW	Apr-19
59	MS-100.1	2019_T1	Office 365 Management	MW	Apr-19
60	MS-100.2	2019_T2	Microsoft 365 Tenant and Service Management	MW	Apr-19
61	MS-100.3	2019_T2	Microsoft 365 Identity Management	MW	Apr-19
62	MS-101.1	2019_T2	Microsoft 365 Security Management	MW	Apr-19
63	MS-101.2	2019_T1	Microsoft 365 Compliance Management	MW	Apr-19
64	MS-101.3	2019_T2	Microsoft 365 Device Management	MW	Apr-19
65	MS-200.1	2019_T1	Understanding the Modern Messaging Infrastructure	MW	Apr-19
66	MS-200.2	2019_T1	Managing Client Access and Mail Flow	MW	Apr-19

67	MS-200.3	2019_T1	Managing Messaging High Availability and Disaster Recovery	MW	Apr-19
68	MS-201.1	2019_T1	Defining a Hybrid Messaging Strategy	MW	Apr-19
69	MS-201.2	2019_T1	Managing Messaging Security, Hygiene, and Compliance	MW	Apr-19
70	MS-300.1	2019_T1	Managing Office 365 Content Services	MW	Apr-19
71	MS-300.2	2019_T1	Managing SharePoint Online	MW	Apr-19
72	MS-300.3	2019_T1	Enabling Microsoft Teams for Collaboration	MW	Apr-19
73	MS-300.4	2019_T1	Enabling Office 365 Workloads for Collaboration	MW	Apr-19
74	MS-301.1	2019_T1	Implementing SharePoint 2019 Infrastructure	MW	Apr-19
75	MS-301.2	2019_T1	Implementing SharePoint 2019 Service Applications	MW	Apr-19
76	MS-301.3	2019_T1	Implementing SharePoint Hybrid Scenarios	MW	Apr-19
77	MS-301.4	2019_T1	Migrating to SharePoint Online	MW	Apr-19
78	MS-500.1	2019_T1	Managing Microsoft 365 Identity and Access	MW	Apr-19
79	MS-500.2	2019_T1	Implementing Microsoft 365 Threat Protection	MW	Apr-19
80	MS-500.3	2019_T1	Implementing Microsoft 365 Information Protection	MW	Apr-19
81	MS-500.4	2019_T1	Administering Microsoft 365 Built in Compliance	MW	Apr-19
82	MS-900.1	2019_T2	Microsoft 365 Fundamentals	MW	Apr-19

MPP Tracks

The Microsoft Professional Program (MPP) provides learners with the ability to earn a digitally sharable, résumé-worthy credential that confirms mastery of specific and impactful functional and technical skills after passing all courses in a set track and completing a final project. For information on the Microsoft Professional Program and the tracks, please visit the [Microsoft Professional Program site](#).

NOTE: See latest release of the Cybersecurity Track!

REFERENCE: Track Mapping refers to the Skill Stop and the options within the Skills Stop

e.g. "Microsoft Professional Orientation: Big Data" is the starting point of the track and hence "1"

"Analyzing and Visualizing Data with Power BI" is the 2nd Option of the 2nd Skill Stop and hence 2.2

BIG DATA			
Course Number	Title	Track Mapping	Current as of
DAT229x	Microsoft Professional Orientation: Big Data	1	May-19
DAT206x	Analyzing and Visualizing Data with Excel	2.1	May-19
DAT207x	Analyzing and Visualizing Data with Power BI	2.2	May-19
DAT221x	Introduction to NoSQL Data Solutions	3	May-19
DAT201x	Querying Data with Transact-SQL	4	May-19
DAT220x	Delivering a Data Warehouse in the Cloud	5	May-19
DAT223.1x	Processing Big Data with Azure Data Lake Analytics	6.1	May-19
DAT202.1x	Processing Big Data with Hadoop in Azure HDInsight	6.2	May-19
DAT223.2x	Processing Real-Time Data Streams in Azure	7.1	May-19
DAT202.2x	Implementing Real-Time Analytics in Azure HDInsight	7.2	May-19
DAT223.3x	Orchestrating Big Data with Azure Data Factory	8	May-19
DAT228x	Developing Big Data Solutions with Azure Machine Learning	9.1	May-19
DAT213x	Analyzing Big Data with Microsoft R	9.2	May-19
DAT202.3x	Implementing Predictive Analytics with Spark in Azure HDInsight	9.3	May-19
DAT230x	Microsoft Professional Capstone : Big Data	10	May-19

<u>DATA SCIENCE</u>			
Course Number	Title	Track Mapping	Current as of
DAT101x	Microsoft Professional Orientation: Data Science	1	May-19
DAT206x	Analyzing and Visualizing Data with Excel	2.1	May-19
DAT207x	Analyzing and Visualizing Data with Power BI	2.2	May-19
DAT248x	Analytics Storytelling for Impact	3	May-19
DAT249x	Ethics and Law in Data and Analytics	4	May-19
DAT201x	Querying Data with Transact-SQL	5	May-19
DAT204x	Introduction to R for Data Science	6.1	May-19
DAT208x	Introduction to Python for Data Science	6.2	May-19
DAT280x	Essential Math for Machine Learning: R Edition	7.1	May-19
DAT256x	Essential Math for Machine Learning: Python Edition	7.2	May-19
DAT222x	Essential Statistics for Data Analysis using Excel	7.3	May-19
DAT274x	Data Science Research Methods: R Edition	8.1	May-19
DAT273x	Data Science Research Methods: Python Edition	8.2	May-19
DAT275x	Principles of Machine Learning: Python Edition	9.1	May-19
DAT276x	Principles of Machine Learning: R Edition	9.2	May-19
DAT228x	Developing Big Data Solutions with Azure Machine Learning	10.1	May-19
DAT213x	Analyzing Big Data with Microsoft R	10.2	May-19
DAT202.3x	Implementing Predictive Analytics with Spark in Azure HDInsight	10.3	May-19
DAT102x	Microsoft Professional Capstone: Data Science	11	May-19

DEVOPS			
Course Number	Title	Track Mapping	Current as of
DEVOPS200.1x	Introduction to DevOps Practices	1	May-19
DEVOPS200.2x	Infrastructure as Code	2	May-19
DEVOPS200.3x	Continuous Integration and Continuous Deployment	3	May-19
DEVOPS200.4x	Configuration Management for Containerized Delivery	4	May-19
DEVOPS200.5x	DevOps Testing	5	May-19
DEVOPS200.6x	DevOps for Databases	6	May-19
DEVOPS200.7x	Application Monitoring and Feedback Loops	7	May-19
DEVOPS200.8x	DevOps for Mobile Apps	8	May-19
DEVOPS200.9x	Architecting Distributed Cloud Applications	9	May-19
DEVOPS200.10x	Microsoft Professional Capstone: DevOps	10	May-19

ARTIFICIAL INTELLIGENCE			
Course Number	Title	Track Mapping	Current as of
DAT263x	Introduction to Artificial Intelligence	1	May-19
DAT208x	Introduction to Python for Data Science	2	May-19
DAT256x	Essential Mathematics for Artificial Intelligence	3	May-18
DAT249x	Ethics and Law in Data and Analytics	4	May-19
DAT273x	Data Science Research Methods: Python Edition	5	May-19
DAT275x	Principles of Machine Learning: Python Edition	6	May-19
DAT236x	Deep Learning Explained	7	May-19
DAT257x	Reinforcement Learning Explained	8	May-19
DEV288x	Natural Language Processing (NLP)	9.1	May-19
DEV287x	Speech Recognition Systems and Synthesis	9.2	May-19
DEV290x	Computer Vision and Image Analysis	9.3	May-19
DAT264x	Microsoft Professional Capstone: Artificial Intelligence	10	May-19

IT SUPPORT			
Course Number	Title	Track Mapping	Current as of
CLD251x	IT Support: Fundamentals	1	May-19
CLD252x	IT Support: Communication	2	May-19
CLD253x	IT Support: Troubleshooting	3	May-19
CLD254x	IT Support: Documentation	4	May-19
CLD259x	IT Support: Hardware Essentials	5	May-19
CLD260x	IT Support: Networking Essentials	6	May-19
CLD255x	Windows Support Essentials: Installation	7	May-19
CLD257x	Windows Support Essentials: Configuration	8	May-19
CLD256x	Windows Support Essentials: Maintenance	9	May-19
CLD258x	IT Support: Troubleshooting Windows	10	May-19
CLD261x	Microsoft Office Fundamentals	11	May-19
CLD262x	IT Support: Troubleshooting Microsoft Office	12	May-19
CLD263x	IT Support: Cloud Fundamentals	13	May-19
CLD264x	Microsoft Professional Capstone: IT Support	14	May-19

ENTRY LEVEL SOFTWARE DEVELOPMENT			
Course Number	Title	Track Mapping	Current as of
DEV262x	Logic and Computational Thinking	1	May-19
DEV236x	Introduction to Python: Absolute Beginner	2	May-19
DEV274x	Introduction to Python: Fundamentals	3	May-19
DEV284x	Designing a Technical Solution	4	May-19
DEV279x	Building Interactive Prototypes using JavaScript	5	May-19
DEV280x	Building Functional Prototypes using Node.js	6	May-19
DEV276x	Learn to Program in Java	7	May-19
DEV277x	Object Oriented Programming in Java	8	May-19
DEV285x	Algorithms and Data Structures	9	May-19
DEV275x	Writing Professional Code	10	May-19
DEV241x	Introduction to Design Thinking	11	May-19
DIS50x	Developing International Software	12	May-19
DEV335x	Microsoft Professional Capstone: Entry Level Software Development	13	May-19

INTERNET OF THINGS (IOT)			
Course Number	Title	Track Mapping	Current as of
DEV296x	Getting Started with the Internet of Things (IoT)	1	May-19
DEV325x	Introduction to Device Programming for IOT: C Edition	2	May-19
DEV297x	IoT Device Configuration and Communication: C Edition	3	May-19
DEV326x	IoT Data Analytics and Storage	4	May-19
DEV312x	Business Intelligence for IoT Solutions	5	May-19
DEV313x	Predictive Analytics for IoT Solutions	6	May-19
DEV301x	IoT Architecture Design and Business Planning	7	May-19
DEV302x	Microsoft Professional Capstone: IoT Solution Architect	8	May-19

DATA ANALYSIS			
Course Number	Title	Track Mapping	Current as of
DAT269x	Data Analysis: A Practical Approach for Absolute Beginners	1	May-19
DAT286x	Essential Math for Data Analysis using Excel Online	2	May-19
DAT268x	Data Visualization: A Practical Approach for Absolute Beginners	3	May-19
DAT205x	Introduction to Data Analysis using Excel	4	May-19
DAT201x	Querying Data with Transact SQL	5	May-19
DAT206x	Analyzing and Visualizing Data with Excel	6.1	May-19
DAT207x	Analyzing and Visualizing Data with Power BI	6.2	May-19
DAT248x	Analytics Storytelling for impact	7	May-19
DAT289x	Applied Data Analysis: Working in Organizations and Industries	8	May-19
DAT290x	Microsoft Professional Capstone: Data Analysis	9	May-19

CYBERSECURITY			
Course Number	Title	Track Mapping	Current as of
INF246x	Enterprise Security Fundamentals	1	May-19
INF249x	Threat Detection: Planning for a Secure Enterprise	2	May-19
INF250x	Planning a Security Incident Response	3	May-19
INF251x	Powershell Security Best Practices	4	May-19
INF253x	Managing Identity	5	May-19
CLD245x	Security in Office 365	6.1	May-19
DAT243x	Securing Data in Azure and SQL Server	6.2	May-19
CLD211.2x	Microsoft SharePoint 2016: Authentication and Security	6.3	May-19
INF258x	Windows 10 Security Features	7	May-19
INF259x	Windows Server 2016 Security Features	8	May-19
INF260x	Microsoft Azure Security Services	9	May-19
INF261x	Microsoft Professional Capstone: Cybersecurity	12	May-19

The Microsoft Professional Program (MPP) continues to grow and adapt. Future developments and track launches are on their way!

Support

Frequently Asked Questions

- **When I import the new courses are there any changes in the documentation process that I need to follow.**
 - Yes, please pay close attention to the RUN_ID for the current batch of courses; RUN_ID 2019_T1 represents courses released or refreshed during calendar year Q1 (Jan-Mar) of 2019. They maintain relevance and do not require an update. However, RUN_ID 2019_T2 for courses releasing or refreshed in Q2 (Apr-Jun) and so on. Please make sure to update all courses that have new RUN_IDs.
- **Can I just keep offering the courses that I have in my instance?**
 - Yes, and for those that have no refreshed RUN_IDs (see above) you should. However, the material in courses with new RUN_IDs is updated and older versions of these courses will be outdated and not relevant for the skills requires performing the job/task. It would be best to time courses to end every Quarter such that you could setup a new run of the same course with the refreshed course material.
- **Should I refresh the course as soon as receive the updated courses?**
 - No. The guidance videos clearly outline how courses need to be setup. If you refresh and overwrite a running course instance, you may lose all student progress data. Please setup the new course as a separate instance and get new students to enroll in the new course. Existing students can complete the older course till the end date setup for the older course.
- **Can I offer a retired course to students who do not want a Microsoft Certificate?**
 - This is not advised as retired course does not reflect the current underlying technology. Advise them to take the more appropriate current courses.
- **What should I do if I have just started a course run of retired course?**
 - Students may complete the course and be eligible for a Certificate as long as they make the request prior to 90 days from course retirement notification.
- **My students just completed retired course can they still get a Certificate?**
 - Yes, as long as they request their Certificate prior to 90 days from course retirement notification.
- **My students just completed a lab but their progress is not being recorded in the course, what is the cause of this issue?**
 - This is a known issue which occurs when a partner's instance has an incomplete or misconfigured Secure Socket Layer certification. Once the SSL certificates are enabled and configured correctly this issue will no longer occur. We have found that websites/webtools that verify the SSL status of a site can help considerably.

Courseware Marketplace Support

Currently the LaaS Program continues to be supported through Courseware Marketplace (CWMP). Contact the Courseware Marketplace Regional Support Center (CMRSC) [here](#) with issues or questions regarding:

- Learning Download Center tool access - you are unable to log into the Learning Download Center or the Learning Download Center is unavailable
- Course download issues - the user receives a “Failed - No file” error message or some files fail to download on the first attempt
- Content quality issues - you are running a course and there are issues with a lab connection

Please contact the CMRSC for all of these items. They will triage the issue, provide a fix if readily available, or escalate it to the appropriate team within Microsoft.

In order to help redirect the partners to the right support path, we have created the below step by step guidance on navigating the CMRSC support channel. Please submit your request by reaching out to the RSC Team supporting the LaaS Program.

1. Go to the [RSC Support link](#)
2. Select the right country where the issue is based

Select your Country



- Choose between **support webform** (email communication) and **phone contact**

Phone: — get support from an agent using direct call

E-mail: — access support webform to submit ticket

Address: Arvato Services
Microsoft Courseware
Benzstraße 9-15
D-33442 Herzebrock-Clarholz
Germany

- If you select the link for the support webform, this will take you to a Microsoft Support site to create a ticket.
- Fill out the form with your details and provide a detailed description of the issue.

What Learning Program do you have a question about?
 — Select "Courseware" in the Learning Program field

** for Learning as a Service (LaaS) questions select 'Courseware' in the field above

Let's get more specific. Please select a Category...*

Customer Number* — Insert the MPN Partner Location ID

Order ID* — Insert "1234"

Invoice Number* — Insert "1234"

Order ID & Invoice Number
are required fields only for
Courseware issues, not for
LaaS issues

Learning Partner Learner Support

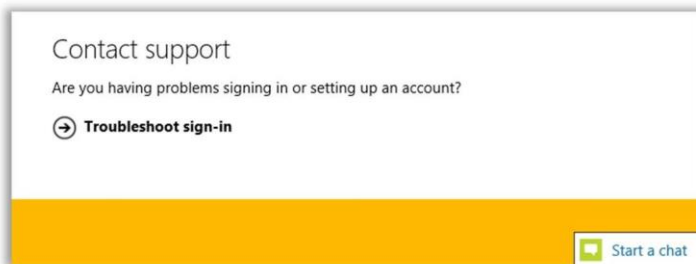
As a Learning Partner offering the LaaS program your organization is required to support Student queries related to training courses and certificate vouchers. The following valuable contacts should be included in your support communications:

- For course content-specific questions and discussions: Students should work with you the Partner to address and highlight any issues which may come to light. If deeper support is required than Learning Partner's should convey the questions on behalf of the students to the Learning Partner Program Support (below).
- For any other queries: Students should visit the academy.microsoft.com Support Forum for valuable information, including answers to frequently asked questions. If the answer to their question has not already been answered, students can sign-in and post a new question and it will be answered.

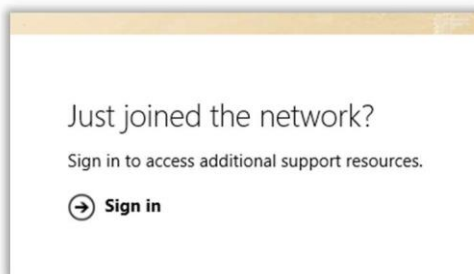
Learning Partner Program Support

To learn more about the Learning Partner Program, or to enroll, visit the [Learning Resources](#) detail page on MPN for valuable resources and instructions to get started.

For help enrolling, renewing or for questions about benefits, contact the Regional Support Center (RSC) [here](#). During normal business hours, you should see an option to "Chat" with the RSC in the lower corner of the page:



If you don't see the option to start a Chat, click on the "Troubleshoot sign-in" link for additional self-help options. Or sign-in to your account to find additional RSC contact options, such as Phone and Communities (forums).



Please note: E-mail is no longer an officially supported communication channel for the RSC.

Annexure #1 - Retired/Removed Courses

Newly Retired/Removed Courses:

- None at this time

SI No.	Course Number	Course Name	Date Retired	Reason
1	AZURE202x	Microsoft Azure Virtual Machines	December 17, 2018	Course to retired due to obsolete skills applicability. There is currently no replacement for this course.
2	AZURE203x	Microsoft Azure Virtual Networks	December 17, 2018	Course to retired due to obsolete skills applicability. There is currently no replacement for this course.
3	AZURE204x	Microsoft Azure Identity	December 17, 2018	Course to retired due to obsolete skills applicability. There is currently no replacement for this course.
4	AZURE205x	Microsoft Azure Storage	December 17, 2018	Course to retired due to obsolete skills applicability. There is currently no replacement for this course.
5	AZURE206x	Microsoft Azure Virtual App Service	December 17, 2018	Course to retired due to obsolete skills applicability. There is currently no replacement for this course.
6	AZURE207x	Databases in Azure	December 17, 2018	Course to retired due to obsolete skills applicability. There is currently no replacement for this course.
7	AZURE208x	Azure Security and Compliance	December 17, 2018	Course to retired due to obsolete skills applicability. There is currently no replacement for this course.
8	AZURE210x	Automating Azure Workloads	December 17, 2018	Course to retired due to obsolete skills applicability. There is currently no replacement for this course.
9	AZURE212x	Migrating Workloads to Azure	December 17, 2018	Course to retired due to obsolete skills applicability. There is currently no replacement for this course.

10	AZURE214x	Azure Fundamentals	December 17, 2018	Course to retired due to obsolete skills applicability. There is currently no replacement for this course.
11	AZURE215x	Microsoft Professional Orientation Cloud Administration	December 17, 2018	Course to retired due to obsolete skills applicability. There is currently no replacement for this course.
12	CLD224x	Understanding the Collaborators	December 17, 2018	Course to retired due to obsolete skills applicability. There is currently no replacement for this course.
13	CLD228x	Skype for Business Fundamentals	December 17, 2018	Course to retired due to obsolete skills applicability. There is currently no replacement for this course.
14	CLD230x	Skype for Business Infrastructure Planning and Design	December 17, 2018	Course to retired due to obsolete skills applicability. There is currently no replacement for this course.
15	CLD231x	Skype for Business Infrastructure Implementation and Conferencing	December 17, 2018	Course to retired due to obsolete skills applicability. There is currently no replacement for this course.
16	CLD232x	Skype for Business Infrastructure Advanced Configuration	December 17, 2018	Course to retired due to obsolete skills applicability. There is currently no replacement for this course.
17	CLD233x	Skype for Business Voice Concepts and Planning	December 17, 2018	Course to retired due to obsolete skills applicability. There is currently no replacement for this course.
18	CLD234x	Skype for Business Voice Hybrid and Routing	December 17, 2018	Course to retired due to obsolete skills applicability. There is currently no replacement for this course.
19	CLD235x	Skype for Business Voice Advanced Workloads	December 17, 2018	Course to retired due to obsolete skills applicability. There is currently no replacement for this course.
20	CLD236x	Troubleshooting Skype for Business	December 17, 2018	Course to retired due to obsolete skills applicability. There is currently no replacement for this course.

21	CLD266x	Skype Operations Framework	December 17, 2018	Course to retired due to obsolete skills applicability. There is currently no replacement for this course.
22	DAT203.1x	Data Science Essentials	December 17, 2018	Course to retired due to obsolete skills applicability. There is currently no replacement for this course.
23	DAT203.2x	Principles of Machine Learning	December 17, 2018	Course to retired due to obsolete skills applicability. There is currently no replacement for this course.
24	DAT209x	Programming in R for Data Science	December 17, 2018	Course to retired due to obsolete skills applicability. There is currently no replacement for this course.
25	DAT210x	Programming with Python for Data Science	December 17, 2018	Course to retired due to obsolete skills applicability. There is currently no replacement for this course.
26	DAT214x	Creating BI Reports with SQL Server Reporting Services	December 17, 2018	Course to retired due to obsolete skills applicability. There is currently no replacement for this course.
27	DAT216x	Delivering a Relational Data Warehouse	December 17, 2018	Course to retired due to obsolete skills applicability. There is currently no replacement for this course.
28	DAT217x	Implementing ETL with SQL Server Integration Services	December 17, 2018	Course to retired due to obsolete skills applicability. There is currently no replacement for this course.
29	DAT224x	Developing a Multidimensional Data Model	December 17, 2018	Course to retired due to obsolete skills applicability. There is currently no replacement for this course.
30	DAT227x	Developing Business Applications with Power Apps and Microsoft Flow	December 17, 2018	Course to retired due to obsolete skills applicability. There is currently no replacement for this course.
31	DAT237x	Developing Planet-Scale Applications in Azure Cosmos DB	December 17, 2018	Course to retired due to obsolete skills applicability. There is currently no replacement for this course.

32	DAT238x	Enabling Data Source Discovery with Azure Data Catalog	December 17, 2018	Course to retired due to obsolete skills applicability. There is currently no replacement for this course.
33	DAT251x	Introduction to Data Modeling	December 17, 2018	Course to retired due to obsolete skills applicability. There is currently no replacement for this course.
34	DEV203x	Introduction to Bootstrap - A Tutorial	December 17, 2018	Course to retired due to obsolete skills applicability. There is currently no replacement for this course.
35	DEV208x	Introduction to jQuery	December 17, 2018	Course to retired due to obsolete skills applicability. There is currently no replacement for this course.
36	DEV212x	DevOps for Developers - How to Get Started	December 17, 2018	Course to retired due to obsolete skills applicability. There is currently no replacement for this course.
37	DEV216x	Developing Dynamic Web Applications Using Angular	December 17, 2018	Course to retired due to obsolete skills applicability. There is currently no replacement for this course.
38	DEV218x	Advanced CSS Concepts	December 17, 2018	Course to retired due to obsolete skills applicability. There is currently no replacement for this course.
39	DEV221x	AngularJS Advanced Framework Techniques	December 17, 2018	Course to retired due to obsolete skills applicability. There is currently no replacement for this course.
40	DEV223x	Getting Started with Azure App Service Web Apps	December 17, 2018	Course to retired due to obsolete skills applicability. There is currently no replacement for this course.
41	DEV224x	Building Your Azure Skills Toolkit	December 17, 2018	Course to retired due to obsolete skills applicability. There is currently no replacement for this course.
42	DEV225x	Developing IoT Solutions with Azure IoT	December 17, 2018	Course to retired due to obsolete skills applicability. There is currently no replacement for this course.

43	DEV234x	Asynchronous Programming with Javascript	December 17, 2018	Course to retired due to obsolete skills applicability. There is currently no replacement for this course.
44	DEV235x	Asynchronous Programming in Csharp and .NET Core	December 17, 2018	Course to retired due to obsolete skills applicability. There is currently no replacement for this course.
45	DEV237x	Microsoft Professional Orientation - Front End Web Development	December 17, 2018	Course to retired due to obsolete skills applicability. There is currently no replacement for this course.
46	DEV247x	Build Web APIs using ASP.NET	December 17, 2018	Course to retired due to obsolete skills applicability. There is currently no replacement for this course.
47	DEV249x	Deploy and Service Mobile Apps Using Azure App Service	December 17, 2018	Course to retired due to obsolete skills applicability. There is currently no replacement for this course.
48	DEV250x	MVC Application Design using NET Core 2	December 17, 2018	Course to retired due to obsolete skills applicability. There is currently no replacement for this course.
49	DEV258x	Data Access in Csharp and NET Core	December 17, 2018	Course to retired due to obsolete skills applicability. There is currently no replacement for this course.
50	DEV273x	Introduction_to_TypeScript_2	December 17, 2018	Course to retired due to obsolete skills applicability. There is currently no replacement for this course.
51	DEV281x	Introduction to ReactJS	December 17, 2018	Course to retired due to obsolete skills applicability. There is currently no replacement for this course.
52	DEV282x	React Router and Redux	December 17, 2018	Course to retired due to obsolete skills applicability. There is currently no replacement for this course.
53	DEV283x	Introduction to NodeJS	December 17, 2018	Course to retired due to obsolete skills applicability. There is currently no replacement for this course.

54	DEV286x	Data Querying Using LINQ and Csharp	December 17, 2018	Course to retired due to obsolete skills applicability. There is currently no replacement for this course.
55	DEV295x	Introduction to Device Programming	December 17, 2018	Course to retired due to obsolete skills applicability. There is currently no replacement for this course.
56	DEV314x	Angular Fundamentals	December 17, 2018	Course to retired due to obsolete skills applicability. There is currently no replacement for this course.
57	DEV315x	Advanced Angular	December 17, 2018	Course to retired due to obsolete skills applicability. There is currently no replacement for this course.
58	DEV330x	Introduction to Python - Creating Salable Robust Interactive Code	December 17, 2018	Course to retired due to obsolete skills applicability. There is currently no replacement for this course.
59	INF204x	Windows 10 Features for a Mobile Workforce: Windows and Devices in the Enterprise	December 17, 2018	Course to retired due to obsolete skills applicability. There is currently no replacement for this course.
60	INF205x	Windows 10 Features for a Mobile Workforce: Managing and Maintaining Devices in the Enterprise	December 17, 2018	Course to retired due to obsolete skills applicability. There is currently no replacement for this course.
61	INF206x	Windows 10 Features for a Mobile Workforce: Configuring Additional Resources	December 17, 2018	Course to retired due to obsolete skills applicability. There is currently no replacement for this course.
62	INF217x	Windows Server 2016- Advanced Storage	December 17, 2018	Course to retired due to obsolete skills applicability. There is currently no replacement for this course.
63	INF218x	Windows Server 2016-Advanced Networking	December 17, 2018	Course to retired due to obsolete skills applicability. There is currently no replacement for this course.
64	INF219x	Windows Server 2016-Advanced Virtualization	December 17, 2018	Course to retired due to obsolete skills applicability. There is currently no replacement for this course.

65	INF220x	Windows Server 2016-Securing Identities and Information	December 17, 2018	Course to retired due to obsolete skills applicability. There is currently no replacement for this course.
66	INF262x	System Center 2016 Building a Datacenter Fabric	December 17, 2018	Course to retired due to obsolete skills applicability. There is currently no replacement for this course.
67	INF263x	System Center 2016 Building Clouds	December 17, 2018	Course to retired due to obsolete skills applicability. There is currently no replacement for this course.
68	AZURE209x	Managing Azure Workloads	November 30, 2018	Course to retired due to obsolete skills applicability. There is currently no replacement for this course.
69	CLD208.1x	Microsoft Exchange Server 2016 - 1: Infrastructure	November 30, 2018	Course to retired due to lack of learner course completion and interest.
70	CLD220x	Provisioning Office 365 Services	November 30, 2018	Course to retired due to obsolete skills applicability. There is currently no replacement for this course.
71	CLD224x	Understanding the Collaborator	November 30, 2018	Course to retired due to lack of learner course completion and interest.
72	CLD228x	Skype for Business: Fundamentals	November 30, 2018	Course to retired due to lack of learner course completion and interest.
73	CLD230x	Skype for Business: Infrastructure Planning and Design	November 30, 2018	Course to retired due to lack of learner course completion and interest.
74	CLD231x	Skype for Business: Infrastructure Implementation and Conferencing	November 30, 2018	Course to retired due to lack of learner course completion and interest.
75	CLD232x	Skype for Business: Infrastructure Advanced Configuration	November 30, 2018	Course to retired due to lack of learner course completion and interest.
76	CLD233x	Skype for Business: Voice Concepts and Planning	November 30, 2018	Course to retired due to lack of learner course completion and interest.
77	CLD234x	Skype for Business: Voice Hybrid and Routing	November 30, 2018	Course to retired due to lack of learner course completion and interest.

78	CLD235x	Skype for Business: Voice Advanced Workloads	November 30, 2018	Course to retired due to lack of learner course completion and interest.
79	CLD236x	Troubleshooting Skype for Business	November 30, 2018	Course to retired due to lack of learner course completion and interest.
80	CLD246x	Troubleshooting Microsoft Exchange Server 2017	November 30, 2018	Course to retired due to obsolete skills applicability. There is currently no replacement for this course.
81	CLD253x	IT Support: Troubleshooting	November 30, 2018	Course to retired due to lack of learner course completion and interest.
82	CLD255x	Windows Support Essentials: Installation	November 30, 2018	Course to retired due to lack of learner course completion and interest.
83	CLD256x	Windows Support Essentials: Maintenance	November 30, 2018	Course to retired due to lack of learner course completion and interest.
84	CLD257x	Windows Support Essentials: Configuration	November 30, 2018	Course to retired due to lack of learner course completion and interest.
85	CLD259x	IT Support: Hardware Essentials	November 30, 2018	Course to retired due to lack of learner course completion and interest.
86	CLD261x	Microsoft Office Fundamentals: Outlook, Word, and Excel	November 30, 2018	Course to retired due to lack of learner course completion and interest.
87	CLD263x	IT Support: Cloud Fundamentals	November 30, 2018	Course to retired due to lack of learner course completion and interest.
88	CLD266x	Skype Operations Framework	November 30, 2018	Course to retired due to lack of learner course completion and interest.
89	DAT202.1x	Processing Big Data with Hadoop in Azure HDInsight	November 30, 2018	Course to retired due to lack of learner course completion and interest.
90	DAT202.2x	Processing Real-Time Data with Azure HDInsight	November 30, 2018	Course to retired due to lack of learner course completion and interest.
91	DAT203.1x	Data Science Essentials	November 30, 2018	Course to retired due to obsolete skills applicability. There is currently no replacement for this course.

92	DAT203.2x	Principles of Machine Learning	November 30, 2018	Course to retired due to obsolete skills applicability. There is currently no replacement for this course.
93	DAT203.3x	Applied Machine Learning	November 30, 2018	Course to retired due to obsolete skills applicability. There is currently no replacement for this course.
94	DAT209x	Programming with R for Data Science	November 30, 2018	Course to retired due to obsolete skills applicability. There is currently no replacement for this course.
95	DAT214x	Creating BI Reports with SQL Server Reporting Services	November 30, 2018	Course to retired due to lack of learner course completion and interest.
96	DAT251x	Introduction to Data Modeling	November 30, 2018	Course to retired due to lack of learner course completion and interest.
97	DEV210x	Introduction to C++	November 30, 2018	Course to retired due to lack of learner course completion and interest.
98	DEV211.1x	Introduction to HTML and Javascript	November 30, 2018	Course to retired due to obsolete skills applicability. There is currently no replacement for this course.
99	DEV215x	Introduction to Xamarin.Forms	November 30, 2018	Course to retired due to obsolete skills applicability. There is currently no replacement for this course.
100	DEV221x	AngularJS: Advanced Framework Techniques	November 30, 2018	Course to retired due to obsolete skills applicability. Content is replaced by DEV315x.
101	DEV223x	Getting Started with Azure App Service: Web Apps	November 30, 2018	Course to retired due to lack of learner course completion and interest.
102	DEV275x	Writing Professional Code	November 30, 2018	Course to retired due to obsolete skills applicability. There is currently no replacement for this course.
103	DEVOPS200.8x	DevOps for Mobile Apps	November 30, 2018	Course to retired due to lack of learner course completion and interest.
104	INF204x	Windows 10 Features for a Mobile Workforce: Windows and Devices in the Enterprise	November 30, 2018	Course to retired due to lack of learner course completion and interest.

105	INF206x	Windows 10 Features for a Mobile Workforce: Configuring Additional Resources	November 30, 2018	Course to retired due to lack of learner course completion and interest.
106	INF217x	Windows Server 2016: Advanced Storage	November 30, 2018	Course to retired due to lack of learner course completion and interest.
107	INF218x	Windows Server 2016: Advanced Networking	November 30, 2018	Course to retired due to lack of learner course completion and interest.
108	INF251x	PowerShell Security Best Practices	November 30, 2018	Course to retired due to lack of learner course completion and interest.
109	INF258x	Windows 10 Security Features	November 30, 2018	Course to retired due to lack of learner course completion and interest.
110	INF259x	Windows Server 2016 Security Features	November 30, 2018	Course to retired due to lack of learner course completion and interest.
111	INF260x	Microsoft Azure Security Services	November 30, 2018	Course to retired due to lack of learner course completion and interest.
112	INF262x	System Center 2016: Building a Datacenter Fabric	November 30, 2018	Course to retired due to lack of learner course completion and interest.
113	DEV220x	AngularJS: Framework Fundamentals	May 15, 2018	Course to retired due to obsolete skills applicability. There is currently no replacement for this course.
114	DEV222x	Using Open Source Web Tooling to Improve Development Proficiency	May 15, 2018	Course to retired due to obsolete skills applicability. There is currently no replacement for this course.
115	DAT203.3x	Applied Machine Learning	May 15, 2018	Course to retired due to obsolete skills applicability. There is currently no replacement for this course.
116	AZURE211x	Azure Application Deployment and Management	Dec 31, 2017	Course to retired due to obsolete skills applicability. There is currently no replacement for this course.
117	AZURE213x	Microsoft Azure for AWS Experts	Feb 20, 2018	Course to retired due to obsolete skills applicability. There is currently no replacement for this course.

118	DEV205Bx	Architecting Microsoft Azure Solutions	Feb 20, 2018	Course to retired due to obsolete skills applicability. There is currently no replacement for this course.
119	DEV204x	Programming with C#	Feb 20, 2018	Course to retired due to obsolete skills applicability. Content is replaced by DEV204.1x, DEV204.2x, and DEV204.3x
120	DEV233x	Developing Microsoft Azure Solutions	Feb 20, 2018	Course to retired due to obsolete skills applicability. There is currently no replacement for this course.
121	DAT211x	Developing Intelligent Apps and Bots	Feb 20, 2018	Course to retired due to obsolete skills applicability.
122				There is currently no replacement for this course. It was removed from the Data Science Professional Program June 30, 2017
123	DAT215.3x	Managing SQL Database Transactions and Concurrency	Feb 20, 2018	Course to retired and content has been incorporated into DAT215.1x, DAT215.2x, DAT215.4x, DAT215.5x
124	CLD216x	Microsoft SharePoint Online for Site Administrators	May 15, 2018	Course to retired due to obsolete skills applicability. There is currently no replacement for this course.
125	CLD243x	Microsoft Office 365 - Identities	May 15, 2018	Course to retired due to obsolete skills applicability. There is currently no replacement for this course.
126	DAT212x	Interpreting and communicating Data Insights in Business	May 15, 2018	Course to retired due to obsolete skills applicability. There is currently no replacement for this course.
127	DEV211.1x	Introduction to HTML and JavaScript	May 15, 2018	Course to retired and content is no longer offered in this channel.
128	AZURE214x	Azure Fundamentals	Feb 20, 2018	Course to retired due to obsolete skills applicability. A replacement version will be released in May, please inquire for updates.